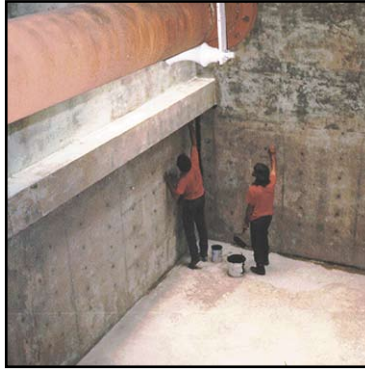


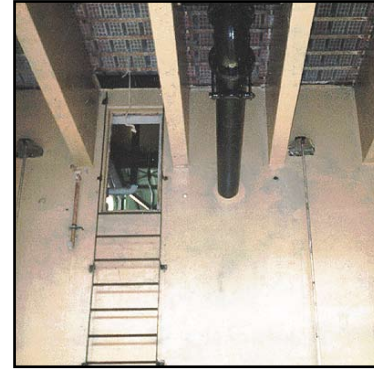
## Belzona Concrete Cooling Tower Basins



*Outside view of the tower, drainage, and clean-up begins.*



*Coating inside the basin commences.*



*The completed job, concrete sealed and protected.*

### STATISTICS

#### CUSTOMER

Corporate Headquarters,  
Southern California, USA

#### APPLICATION DATE

Early 2006

#### SUBSTRATE

Concrete

#### PRODUCTS

Belzona® 5811  
(Immersion Grade)

#### APPLICATION SITUATION

Cooling tower basins required protection.

#### PROBLEM

Basins were deteriorated due to attack from chemically treated water. Left unchecked the concrete would continue to degrade and eventually result in leakage.

#### APPLICATION METHOD

Application was carried out in accordance with Belzona Know-How Leaflet HEX-7.

#### BELZONA FACTS

Approximately \$30,000 in Belzona materials were used to seal the porous surface and to avert costly leakage which could have resulted in inadequate cooling of the facility and contamination of the environment.